

**green
with
envy**

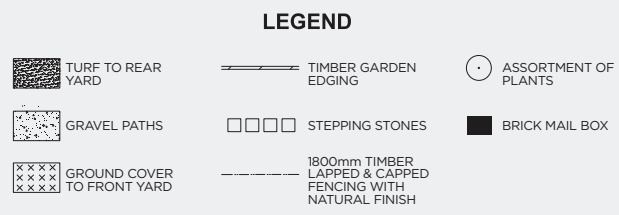
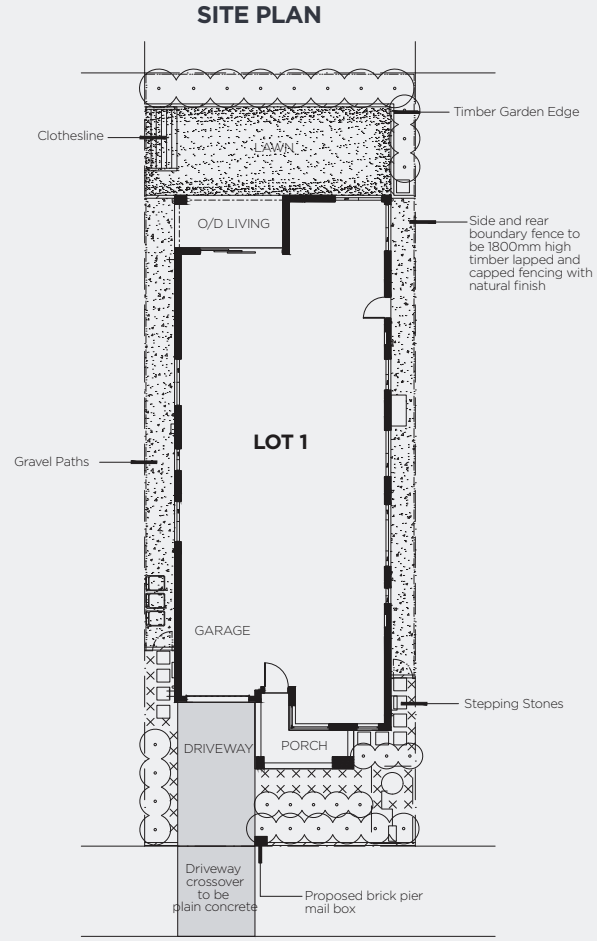
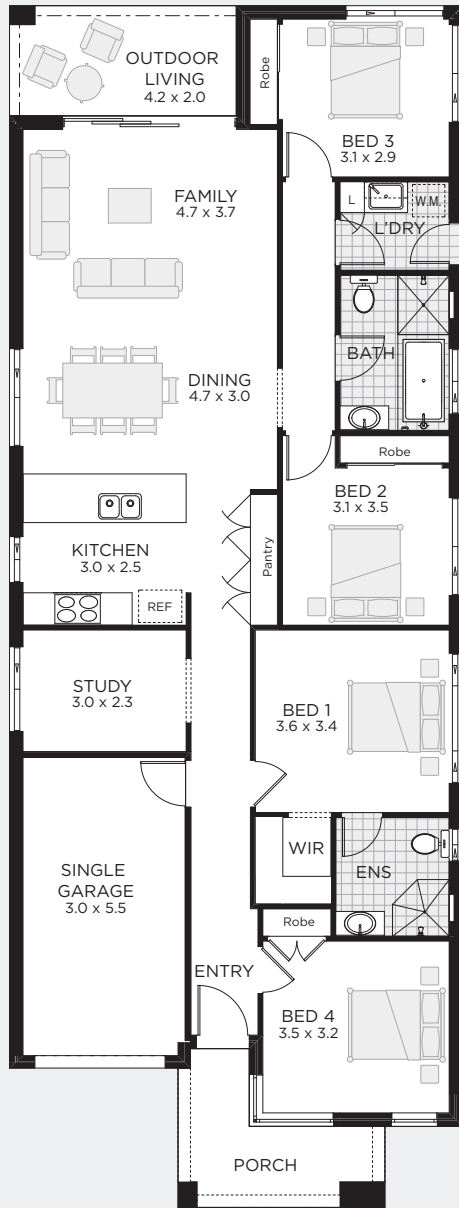
**FIXED PRICE
HOUSE &
LANDSCAPING
PACKAGE**



LOT 1



**CHAMPION
HOMES**



championhomes.com.au

*The contents of this brochure were produced prior to completion of construction. All drawings, images and landscape representation are for illustrative purposes and should be used as a visual guide only. Champion Homes reserves the right to revise plans, specifications without notice. All point of sale and marketing material are for illustrative purposes only. Champion Homes gives no warranty and make no representation as to the accuracy or sufficiency of any description, illustration, photograph, image or statement contained in this brochure and accepts no liability for any loss which may be suffered by any person who relies either wholly or in part upon the information presented. Potential purchasers should rely on their own enquiries. Note both the landscape plan and house plan is indicative only and may be amended at any time to suit site conditions and/or estate conditions/requirements. This offer is one-off and not available on any of our other homes. The free landscaping offer and bonus upgrades are exclusive to these packages only and this promotional offer will not be exchanged for goods of a similar value. October 2018. CHH2620-26

LOT 1

\$798,800 Fixed Price

Kalinda Ave, The Gables Box Hill

Custom Design, Custom Facade
OUTDOOR LIVING / STUDY

315m ² Approx. Land Size	BED 4 BATH 2 CARS 1	Sq Sqm	19 176.46
---	---------------------------	-----------	--------------

8 only

Remember, this outstanding **FREE** Landscaping offer is only on **8 HOUSE & LANDSCAPE PACKAGES** at The Gables Estate, Box Hill. This is a limited offer **so don't delay.**

1. Green with envy **FREE** Landscaping Offer valued at **\$21,000***
2. This home includes the Bonus Turnkey Upgrade valued at **\$55,000***

Find out more by visiting www.championhomes.com.au/greenwithenvy

Call Denis
0413 836 752
denisl@championhomes.com.au

