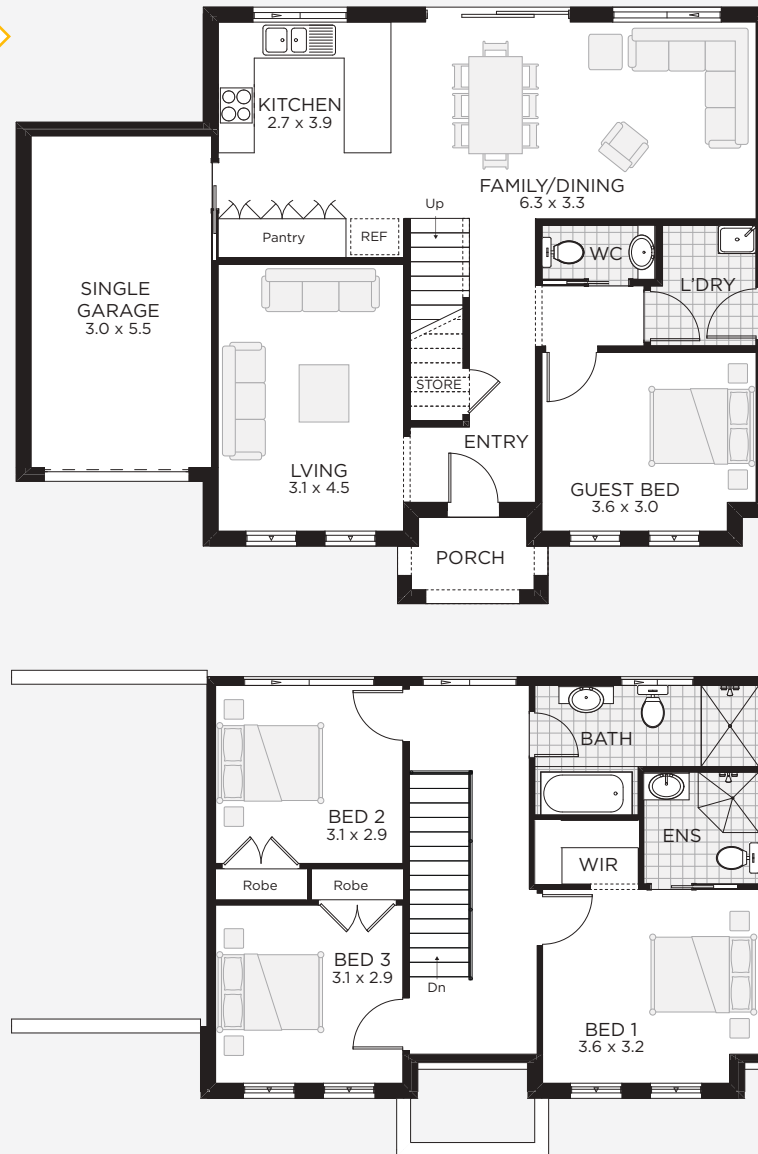


HOUSE and LAND PACKAGE



championhomes.com.au

*Landscaping, retaining walls, fencing and decorator items excluded. Purchasers to confirm final inclusions with Champion Homes Salesperson. All drawings, images and photographs are for illustrative purposes only and should be used as a visual guide only. Champion homes reserves the right to revise plans, specifications and prices without notice or obligation. Note this plan is indicative only and may be amended at any time to suit site conditions and/or estate conditions/requirements. Site costs based on maximum 500mm fall over block with even cut & fill and "m or h slab" classification. 14/03/2019

LOT 911

\$639,000

Proposed Road, Riverstone

FREEDOM 170, Athina Facade

251m²
Approx.
Land Size

BED	4
BATH	2.5
CARS	1

Sq	18
Sqm	170
Width	12.59m
Depth	9.95m



Inclusions

- Site costs and BASIX
- Council Development Application fees
- Plain Concrete driveway
- Quality floor tiles to entry hallway, kitchen, family and dining
- Quality carpet to balance of house
- Tiles to entry porch
- Gas pack
- Insulation to walls and ceiling
- Caesarstone kitchen benchtop
- Air conditioning

Call Morgan
0404 871 672

freedom
House & Land

CHAMPION
HOMES